

BRON



#POSSIBILITIESUNLIMITED



BRON LTD.

PHONE: (242) 327-5348 | FAX: (242) 327-4981

INFO@BEBRON.COM | WWW.BEBRON.COM

BRONINTL

THE BAHAMAS | FLORIDA | TURKS & CAICOS ISLANDS | ST. KITTS & NEVIS

REMOTE & PRIVATE ISLAND

CORPORATE PROFILE

BRON means “*the source*.” We are the source for a new wave of thinking, ingenuity and excellence in the Caribbean and the world over. The sun is instrumental in our branding because it is the source of life. It also extends over the entire earth and we want our possibilities to be as unlimited as its reach, hence our motto

“Possibilities Unlimited.”

BRON is a multinational, interdisciplinary development consulting group with teams in The Bahamas, Florida, Turks and Caicos Islands and St. Kitts. BRON has 60+ in-house staff, completed over 1,200 projects, across 60+ islands and cays of The Bahamas and the Caribbean. The group has built strong industry relationships over the past two decades, having team members who have worked throughout the public sector, private sector, non-profit organizations and academia. Over the years, the team have developed a niche market and reputation in a number of sectors led by the luxury residential and resort development industry that currently includes architectural services, engineering, environmental sciences, project management, drilling, field testing, and data collection.



We want to work with you!
Nou vle travay avèk ou!
¡Queremos trabajar contigo!
Nous voulons travailler avec vous!
我☑希望与您合作!

KEY FEATURES



UNDERSTAND HOW TO NAVIGATE THE CARIBBEAN MARKETS:

- Business Environment
- Politics
- Logistics



ONE-STOP-SHOP ACROSS MULTIPLE DISCIPLINES: Integrated Across Disciplines



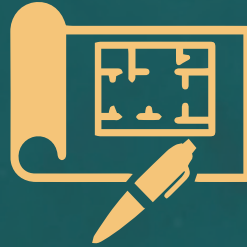
ACCESSIBLE & RESPONSIVE:

- On the ground, present in the market
- Part of the multilingual community

WHAT WE DO!

ARCHITECTURE

- > MASTER PLANNING
- > DESIGNS & SKETCHES
- > CONTRACT DOCUMENTS
- > EXISTING & HISTORICAL BUILDING SURVEYS
- > PROGRAMMING
- > ZONING ANALYSIS



ENGINEERING

- > STRUCTURAL
- > BUILDING
- > COASTAL
- > CIVIL & INFRASTRUCTURE
- > GEOTECHNICAL
- > LAND DEVELOPMENT
- > MARINA, CRUISE & PORT
- > MECHANICAL, ELECTRICAL, PLUMBING, FIRE
- > STRUCTURAL DESIGN



ENVIRONMENTAL

- PHYSICAL AND BASELINE CONDITIONS:
- > TERRESTRIAL, COASTAL & MARINE HABITAT SURVEYS
 - > HABITAT MAPPING
 - > SOIL, WATER, AIR & NOISE QUALITY ASSESSMENTS
 - > ENVIRONMENTAL BASELINE STUDIES
 - > EXTREME WEATHER & CLIMATIC DATA ANALYSES



- IMPACT ANALYSIS AND MITIGATION:
- > MOLD REMEDIATION ASSESSMENTS
 - > DAMAGE AND NEEDS ASSESSMENTS
 - > CLIMATE VULNERABILITY RISK ASSESSMENTS

GEOMATICS & SURVEYING

- DATA MANAGEMENT & FIELD SERVICES:
- > PHOTOGRAMMETRIC DATA COLLECTION
 - > GEOGRAPHICAL INFORMATION SYSTEMS (GIS)
 - > REMOTE SENSING
 - > TOPOGRAPHIC SURVEY
 - > DATA PROCESSING AND ANALYSIS
 - > GEOCODING
 - > PROGRAMMING



DRILLING & TESTING

- SUBSURFACE FIELD SERVICES:
- > SOIL AND SUBSURFACE INVESTIGATIONS
 - > BOREHOLES AND TEST PIT ANALYSES
 - > PARTICLE DISTRIBUTION ANALYSES
 - > ANALYTICAL REVIEWS OF LABORATORY ANALYSES
 - > SUPPLY, DISPOSAL AND MONITORING WELLS
 - > OVERWATER CORE DRILLING
 - > MONITORING WELLS



CONSTRUCTION SERVICES & REGULATORY COMPLIANCE

- > POLICY REVIEWS
- > IMPACT ASSESMENTS
- > MANAGEMENT PLANS
- > SITE ASSESMENTS
- > STAKEHOLDER CONSULTATIONS
- > COMPLIANCE MONITORING



SERVICES

WHERE WE WORK!

We work throughout the *entire* Caribbean and Florida.

OFFICES

FLORIDA

7900 Oak Lane,
Suite 400, Miami Lakes

HQ THE BAHAMAS

57 Raphia Close East,
Airport Industrial Park

TURKS & CAICOS ISLANDS

2 Charter House, The Centre Mews,
Leeward Highway, Providenciales

ST. KITTS & NEVIS

Suite 201, Building 5
Port Zante, Basseterre

HOW WE WORK!

Innovation is one of our core values because it is in our DNA. We strive to ensure every client feels confident that we satisfied their needs within professional and ethical boundaries, while keeping current with **cutting-edge global standards.**



The world has been challenged like never before, and so has our company. In response, our DNA is mutating into something **better, faster, and more resilient.**

Our team of global experts provide tailored multidisciplinary solutions to make your project easier.

The keys to this are:



Global Expertise



Tailored Solutions



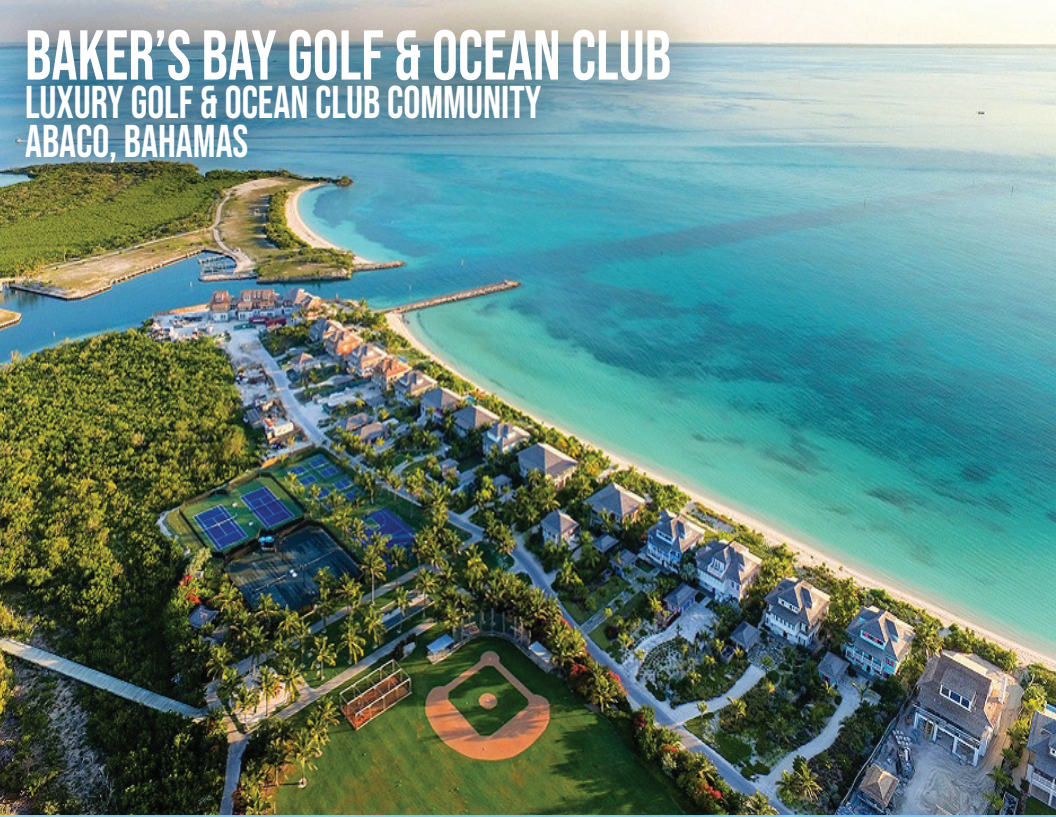
Full Project Partnership



AMBERGRIS CAY
PRIVATE ISLAND RESORT
PROVIDENCIALES, TURKS & CAICOS ISLANDS



AMBERGRIS CAY
PRIVATE ISLAND RESORT
PROVIDENCIALES, TURKS & CAICOS ISLANDS



CHUB CAY RESORT & MARINA

PRIVATE ISLAND DEVELOPMENT
THE BAHAMAS



HALF MOON CAY

REMOTE ISLAND CRUISE SHIP PIER DEVELOPMENT
ELEUTHERA, BAHAMAS



CHUB CAY RESORT & MARINA
PRIVATE ISLAND DEVELOPMENT
THE BAHAMAS



PRINCESS CAY
REMOTE ISLAND CRUISE SHIP PIER DEVELOPMENT
ELEUTHERA, BAHAMAS



COMPANY HISTORY

BACKGROUND

BRON is from the Afrikaans language meaning “*the source*.” It was chosen because we are the source for the multi-disciplinary consulting services that a developer needs to be successful in our region. The sun is instrumental to our branding because it is the source of life.

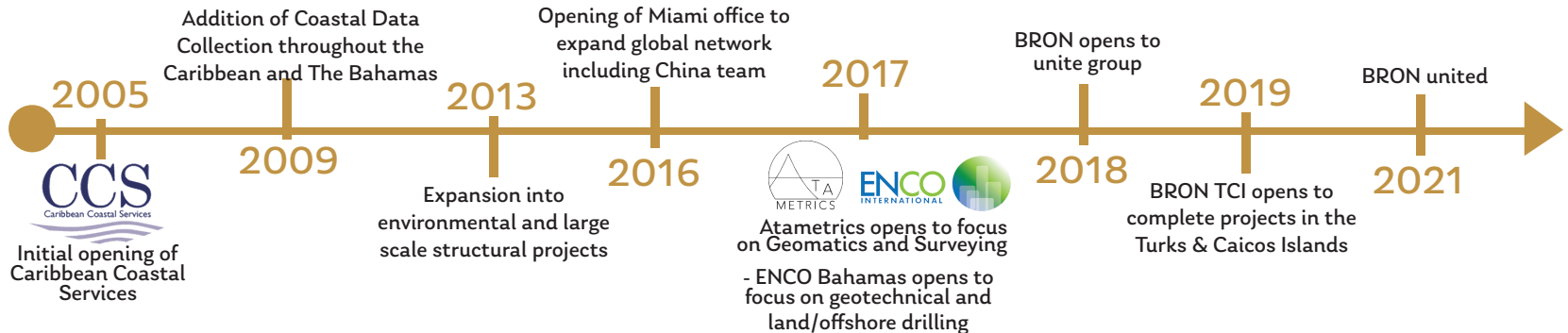
VISION

The go-to team for tailored, innovative engineered solutions

MISSION

A vibrant team providing progressive and expert solutions for our client and community needs.

OUR JOURNEY



CORE VALUES



INNOVATION

Keeping current with cutting edge global standards



INTEGRITY

Every client should feel confident that we satisfy their needs within professional, ethical boundaries



COMMUNITY

Good work life balance, involvement in society and continued mentoring

PURPOSE

To make paradise possible.

BRON
#POSSIBILITIESUNLIMITED



STAY CONNECTED!
Instagram Facebook LinkedIn **BRONINTL**

MAKING PARADISE POSSIBLE