

# BRON

#POSSIBILITIESUNLIMITED



**BRON LTD.**

PHONE: (242) 327-5348 | FAX: (242) 327-4981

INFO@BEBRON.COM | WWW.BEBRON.COM

 BRONINTL

THEBAHAMAS | FLORIDA | TURKS&CAICOSISLANDS | ST.KITTS&NEVIS

## MARINE, WATERFRONT & COASTAL



# CORPORATE PROFILE

BRON means **“the source.”** We are the source for a new wave of thinking, ingenuity and excellence in the Caribbean and the world over. The sun is instrumental in our branding because it is the source of life. It also extends over the entire earth and we want our possibilities to be as unlimited as its reach, hence our motto

**“Possibilities Unlimited.”**

BRON is a multinational, interdisciplinary development consulting group with teams in The Bahamas, Florida, Turks and Caicos Islands and St. Kitts. BRON has 60+ in-house staff, completed over 1,200 projects, across 60+ islands and cays of The Bahamas and the Caribbean. The group has built strong industry relationships over the past two decades, having team members who have worked throughout the public sector, private sector, non-profit organizations and academia. Over the years, the team have developed a niche market and reputation in a number of sectors led by the luxury residential and resort development industry that currently includes architectural services, engineering, environmental sciences, project management, drilling, field testing, and data collection.



We want to work with you!  
Nou vle travay avèk ou!  
¡Queremos trabajar contigo!  
Nous voulons travailler avec vous!  
我☑️希望与您合作!

## KEY FEATURES



### UNDERSTAND HOW TO NAVIGATE THE CARIBBEAN MARKETS:

- Business Environment
- Politics
- Logistics

### ONE-STOP-SHOP ACROSS MULTIPLE DISCIPLINES: Integrated Across Disciplines



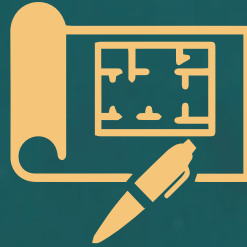
### ACCESSIBLE & RESPONSIVE:

- On the ground, present in the market
- Part of the multilingual community

# WHAT WE DO!

## ARCHITECTURE

- > MASTER PLANNING
- > DESIGNS & SKETCHES
- > CONTRACT DOCUMENTS
- > EXISTING & HISTORICAL BUILDING SURVEYS
- > PROGRAMMING
- > ZONING ANALYSIS



## ENGINEERING

- > STRUCTURAL
- > BUILDING
- > COASTAL
- > CIVIL & INFRASTRUCTURE
- > GEOTECHNICAL
- > LAND DEVELOPMENT
- > MARINA, CRUISE & PORT
- > MECHANICAL, ELECTRICAL, PLUMBING, FIRE
- > STRUCTURAL DESIGN



## ENVIRONMENTAL

- PHYSICAL AND BASELINE CONDITIONS:
- > TERRESTRIAL, COASTAL & MARINE HABITAT SURVEYS
  - > HABITAT MAPPING
  - > SOIL, WATER, AIR & NOISE QUALITY ASSESSMENTS
  - > ENVIRONMENTAL BASELINE STUDIES
  - > EXTREME WEATHER & CLIMATIC DATA ANALYSES



- IMPACT ANALYSIS AND MITIGATION:
- > MOLD REMEDIATION ASSESSMENTS
  - > DAMAGE AND NEEDS ASSESSMENTS
  - > CLIMATE VULNERABILITY RISK ASSESSMENTS

## GEOMATICS & SURVEYING

- DATA MANAGEMENT & FIELD SERVICES:
- > PHOTOGRAMMETRIC DATA COLLECTION
  - > GEOGRAPHICAL INFORMATION SYSTEMS (GIS)
  - > REMOTE SENSING
  - > TOPOGRAPHIC SURVEY
  - > DATA PROCESSING AND ANALYSIS
  - > GEOCODING
  - > PROGRAMMING



## DRILLING & TESTING

- SUBSURFACE FIELD SERVICES:
- > SOIL AND SUBSURFACE INVESTIGATIONS
  - > BOREHOLES AND TEST PIT ANALYSES
  - > PARTICLE DISTRIBUTION ANALYSES
  - > ANALYTICAL REVIEWS OF LABORATORY ANALYSES
  - > SUPPLY, DISPOSAL AND MONITORING WELLS
  - > OVERWATER CORE DRILLING
  - > MONITORING WELLS



## CONSTRUCTION SERVICES & REGULATORY COMPLIANCE

- > POLICY REVIEWS
- > IMPACT ASSESMENTS
- > MANAGEMENT PLANS
- > SITE ASSESMENTS
- > STAKEHOLDER CONSULTATIONS
- > COMPLIANCE MONITORING



SERVICES

# WHERE WE WORK!

We work throughout the *entire* Caribbean and Florida.

## OFFICES

### **FLORIDA**

7900 Oak Lane,  
Suite 400, Miami Lakes

### **HQ THE BAHAMAS**

57 Raphia Close East,  
Airport Industrial Park

### **TURKS & CAICOS ISLANDS**

2 Charter House, The Centre Mews,  
Leeward Highway, Providenciales

### **ST. KITTS & NEVIS**

Suite 201, Building 5  
Port Zante, Basseterre



# HOW WE WORK!

Innovation is one of our core values because it is in our DNA. We strive to ensure every client feels confident that we satisfied their needs within professional and ethical boundaries, while keeping current with **cutting-edge global standards.**



The world has been challenged like never before, and so has our company. In response, our DNA is mutating into something **better, faster, and more resilient.**

Our team of global experts provide tailored multidisciplinary solutions to make your project easier.

The keys to this are:



Global Expertise



Tailored Solutions



Full Project Partnership

**EMERALD BEACH**  
BEACH NOURISHMENT AND STABILIZATION  
PROVIDENCIALES, TURKS & CAICOS ISLANDS





**ONE CABLE BEACH**  
LUXURY CONDOMINIUM DEVELOPMENT  
NASSAU, BAHAMAS



**GOLDYWNN CONDO HOTEL \$100 MILLION**  
MIXED USE - LUXURY CONDO/HOTEL  
NASSAU, BAHAMAS

**GRAND TURK CRUISE PORT**  
CRUISE PORT DEVELOPMENT  
GRAND TURK, TURKS AND CAICOS ISLANDS



**NORTH ABACO PORT**  
INTERNATIONAL & DOMESTIC PORT FACILITY  
ABACO, BAHAMAS

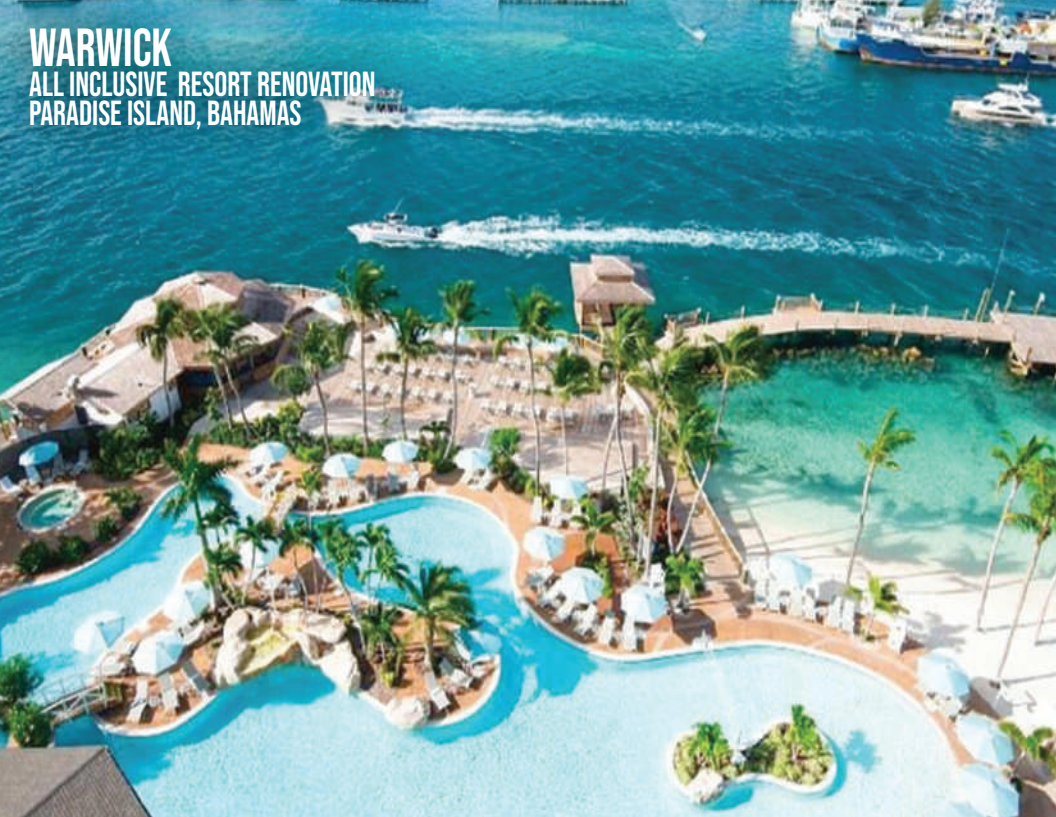




**NASSAU CRUISE PORT \$300MILLION**  
CRUISE HARBOUR REDEVELOPMENT  
NASSAU, BAHAMAS



**WARWICK**  
ALL INCLUSIVE RESORT RENOVATION  
PARADISE ISLAND, BAHAMAS



**ROCK HOUSE**  
LUXURY RESIDENTIAL RESORT DEVELOPMENT  
PROVIDENCIALES, TURKS & CAICOS



**BAHA MAR \$4 BILLION**  
MARINA, & OFFSHORE PRIVATE ISLAND DEVELOPMENT  
NASSAU, BAHAMAS



**CHUB CAY RESORT & MARINA**  
PRIVATE ISLAND DEVELOPMENT  
THE BAHAMAS







**THE POINTE MARINA \$250 MILLION**  
MARINA AND WATERFRONT DEVELOPMENT  
NASSAU, BAHAMAS





**OVER YONDER CAY \$100 MILLION**  
LUXURY PRIVATE ISLAND DEVELOPMENT  
EXUMA, BAHAMAS



**HURRICANE HOLE**  
MARINA DEVELOPMENT  
THE BAHAMAS





# COMPANY HISTORY

## BACKGROUND

BRON is from the Afrikaans language meaning “*the source*.” It was chosen because we are the source for the multi-disciplinary consulting services that a developer needs to be successful in our region. The sun is instrumental to our branding because it is the source of life.

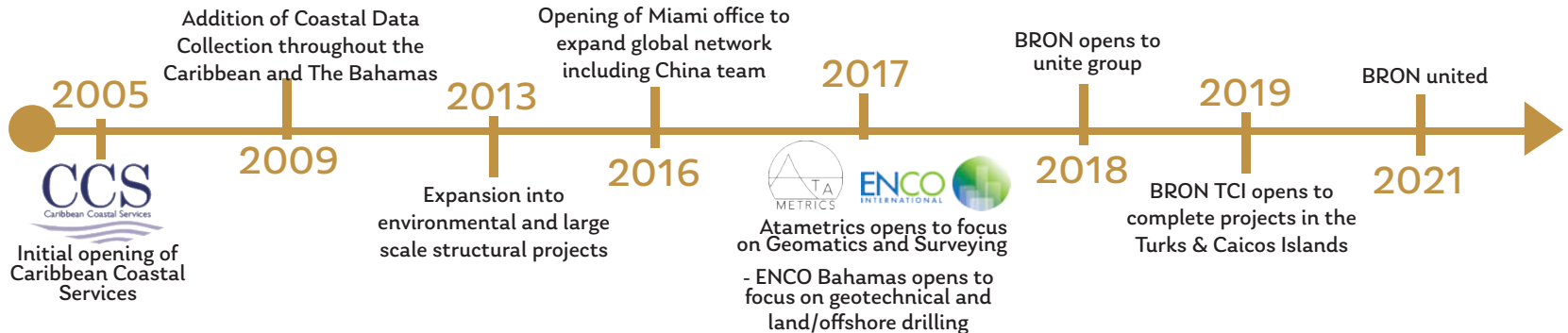
## VISION

To become the go-to team for tailored, innovative engineered solutions

## MISSION

To provide progressive and expert solutions for our client and community needs.

## OUR JOURNEY



## CORE VALUES



### INNOVATION

Keeping current with cutting edge global standards



### INTEGRITY

Every client should feel confident that we satisfy their needs within professional, ethical boundaries



### COMMUNITY

Good work life balance, involvement in society and continued mentoring

## PURPOSE

To make paradise possible.





STAY CONNECTED!  
📷 📺 📱 BRONINTL

**MAKING PARADISE POSSIBLE**